

Global Experience Multimodal (GEM) - Immersive Engineering

UX/HMI



SOFTWARE

KEYWORDS

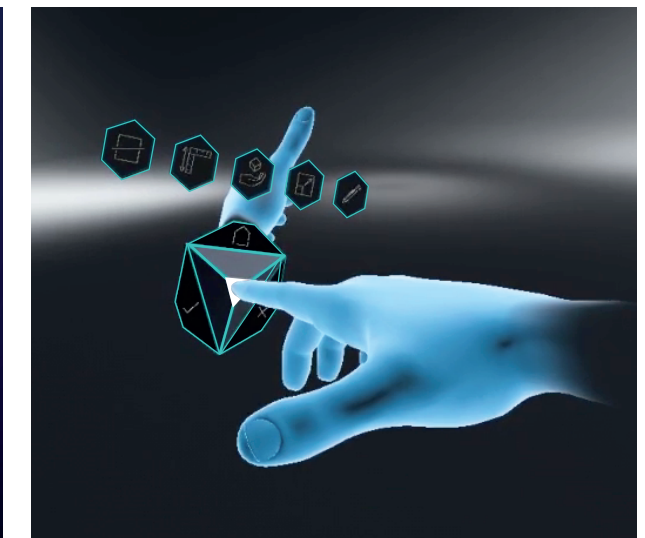
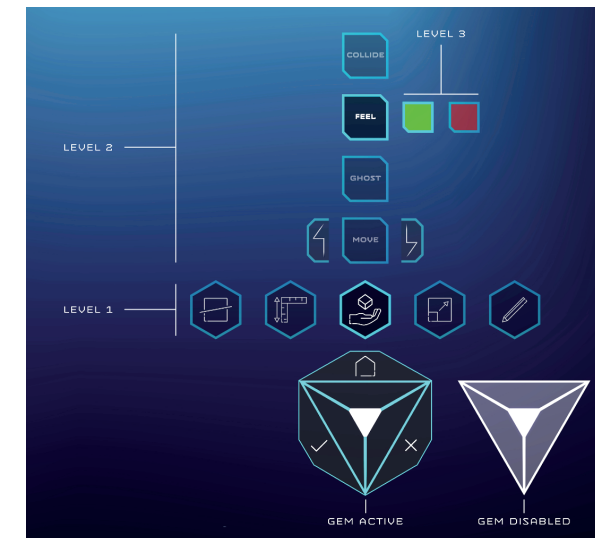
- ▶ Immersive Engineering
- ▶ Leap motion
- ▶ Virtual reality
- ▶ Interacting
- ▶ VRED
- ▶ Menu
- ▶ Display
- ▶ Pointer object
- ▶ Finger tracking
- ▶ ART
- ▶ Commands

Innovations/advantages

Immersive virtual reality system;
user as an active operator of the scene;
flexible and usable process with
any means for interacting with
virtual reality;
one-touch effect on the movement
made by the operator, control object
configuration, which comprises
multiple selectively viewable,
hierarchical command logic levels;
3D Virtual Menu coupled with
the wrist of the other hand (smartwatch);
index finger of the virtual representation
of a user's hand.

Application field

OEMs;
Vehicles engineering.



Product insight

- *Italdesign has invented a powerful immersive virtual reality system that allows users to interact actively with objects in a virtual scene via a configurator, which is also represented in the virtual reality scene. The user operates without having to interrupt the experience or resort to external support via a 3D virtual menu on the wrist of the other hand, similar to a smartwatch. It is a support system designed for OEMs and operators in the field of automotive engineering, but it is easily applicable to any field that requires a virtual customization environment in which the user can operate without any interruption.*



Patent Information

Priority Date – 01 September 2020

Application Number
PCT/IT2020/000062

Publication Number
WO 2022/049608 A1

IPR Dossier n.A27

National patent filings

Contact:

italdesigntoipr@italdesign.it